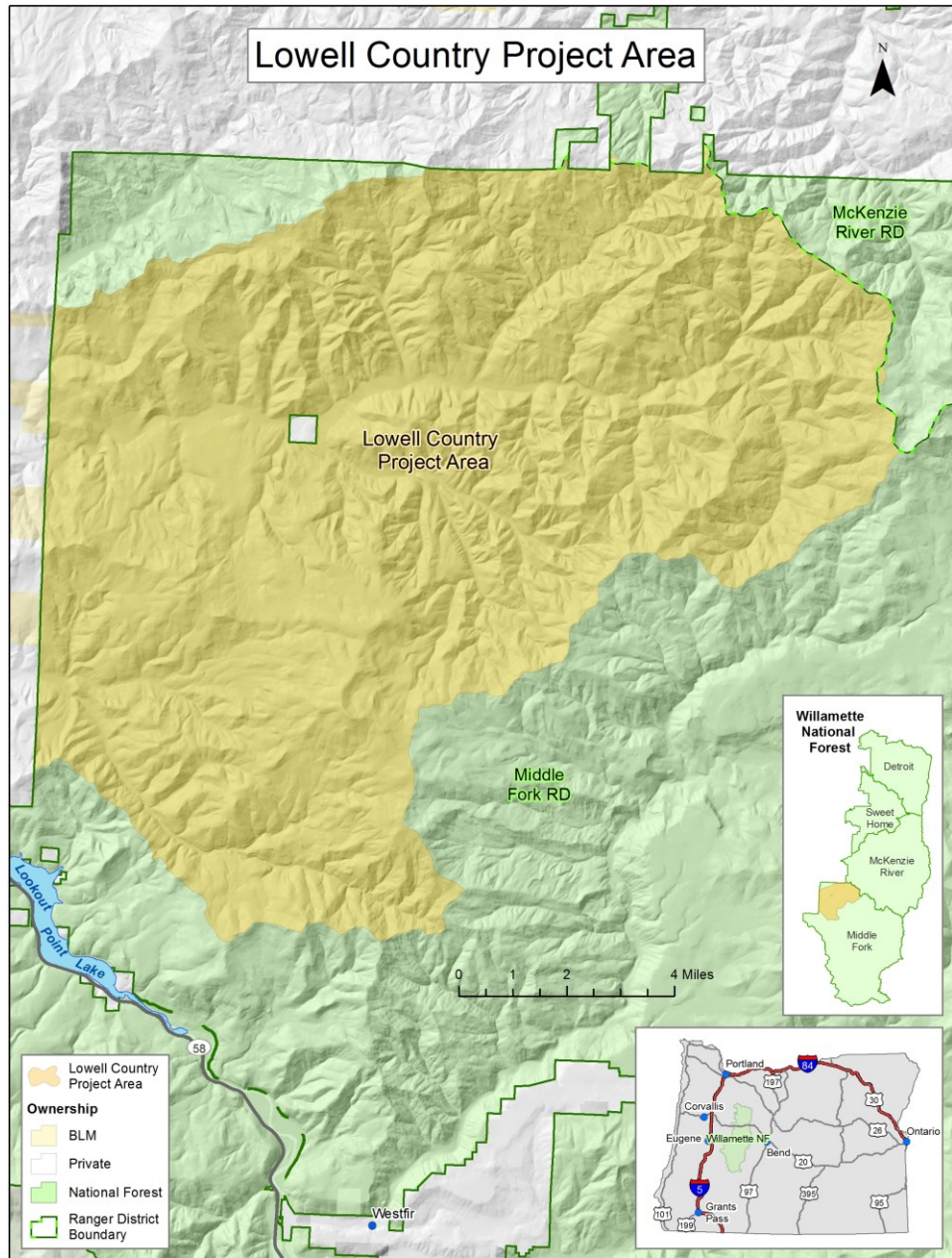


Lowell Country Project

Middle Fork Ranger District,
Willamette National Forest

Presented by Katie Isacksen, NEPA Planner





The Lowell Country project area is located approximately 30 miles east of Eugene, Oregon on the Willamette National Forest and is known as some of the most fertile, productive ground on the Forest.

Main Objectives: Efficiently thin dense young stands and right-size the road system

Thinning of 19,000 acres:

In managed stands ages 40-75 years

To improve growth and vigor, produce timber products, and increase stand diversity

Identifying the minimum road system:

Maintain 550-640 miles

Store 150-190 miles

Decommission 80-120 miles

Connected Actions:

Fuels treatments

Invasive Weed treatments

Aquatic restoration

Project Design:

One Environmental Assessment for entire project area, Decision Notices will come out in phases

Analyzed the effects of the actions in their entirety:

Been doing similar actions for two decades

Have multiple EAs for the project area dating back to 1997

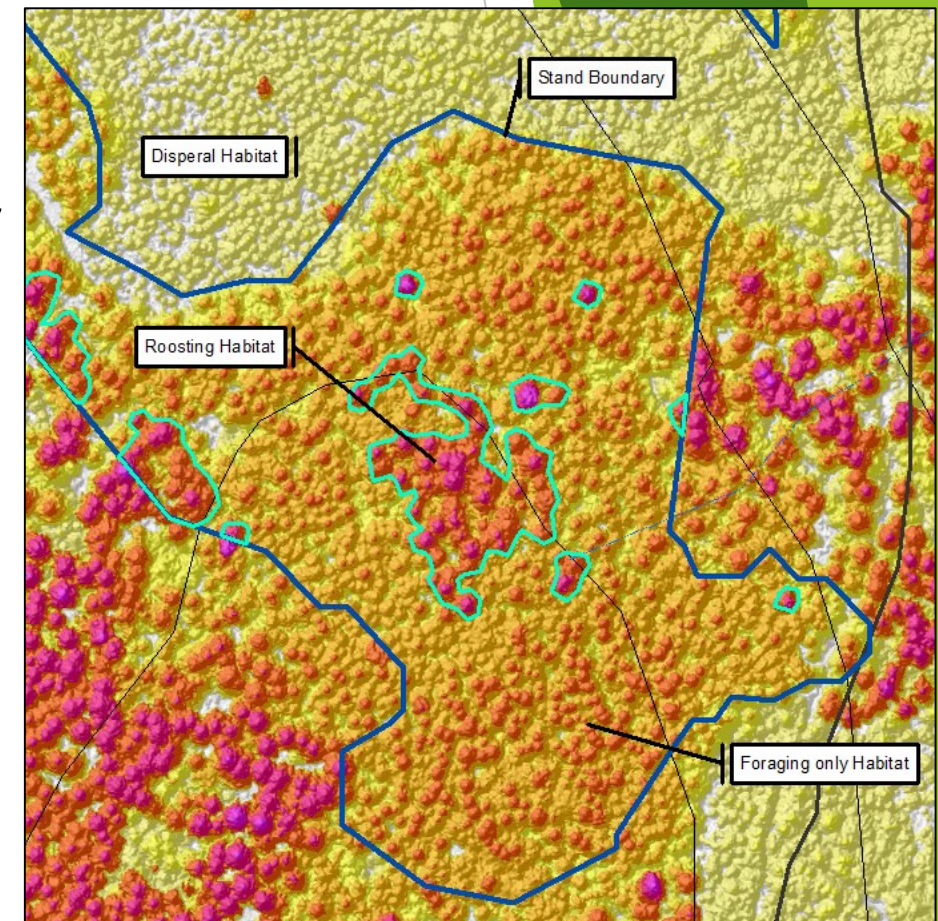
Using Light Detection and Ranging (LIDAR)

Extrapolation from Phase 1 surveys

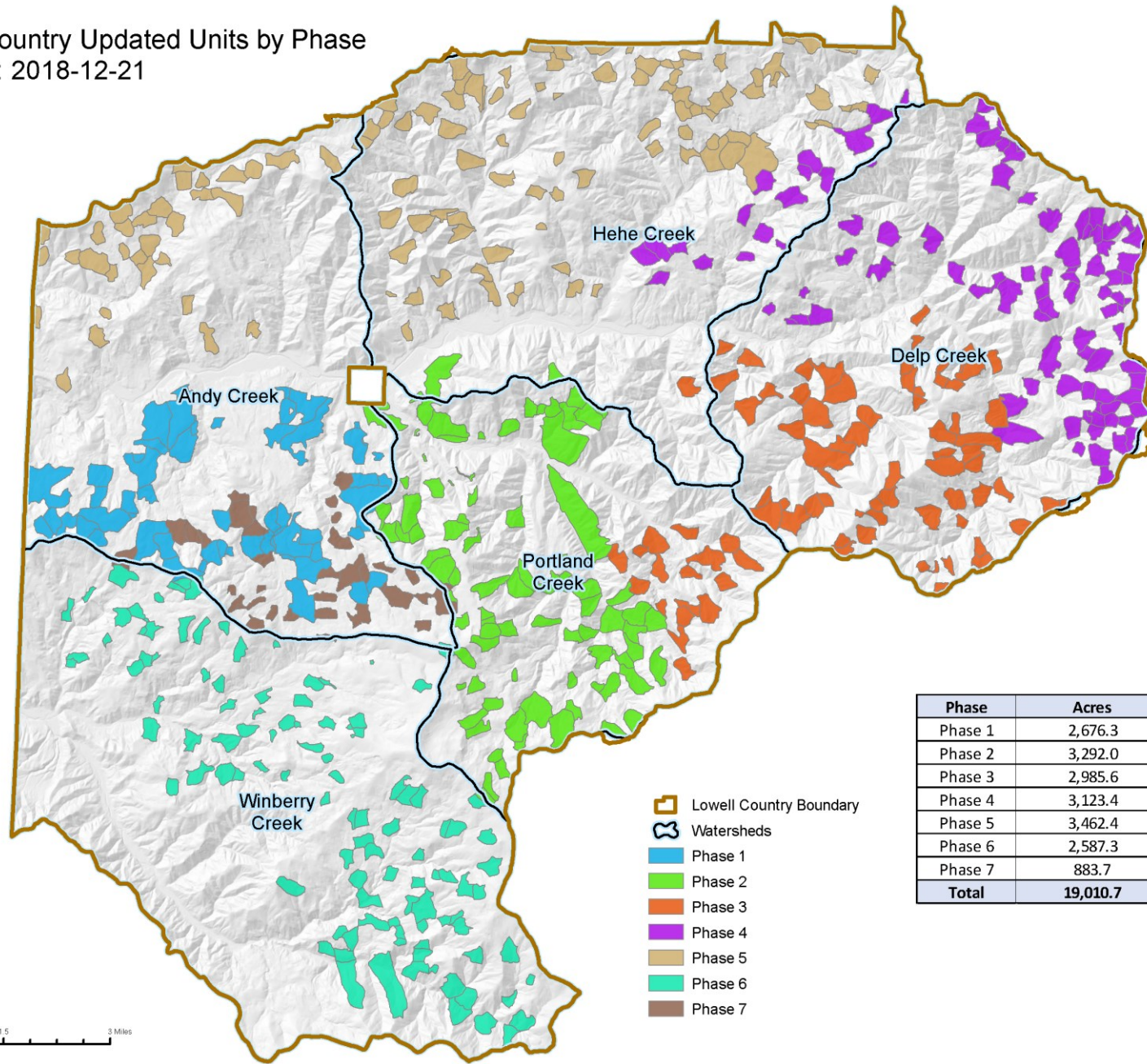
Programmatics are in place with NOAA Fisheries and USFWS

Surveys for additional phases are on-going

Satisfying reporting to regulatory agencies and disclosing site specific information to the line officer/public



Lowell Country Updated Units by Phase
Updated: 2018-12-21



Phase	Acres
Phase 1	2,676.3
Phase 2	3,292.0
Phase 3	2,985.6
Phase 4	3,123.4
Phase 5	3,462.4
Phase 6	2,587.3
Phase 7	883.7
Total	19,010.7

- Lowell Country Boundary
- Watersheds
- Phase 1
- Phase 2
- Phase 3
- Phase 4
- Phase 5
- Phase 6
- Phase 7

Willamette National Forest:

- Average EA/EIS is 2,600 acres and 78 MMBF.
- Takes approximately two years from project initiation to signing the decision notice.

Lowell Country:

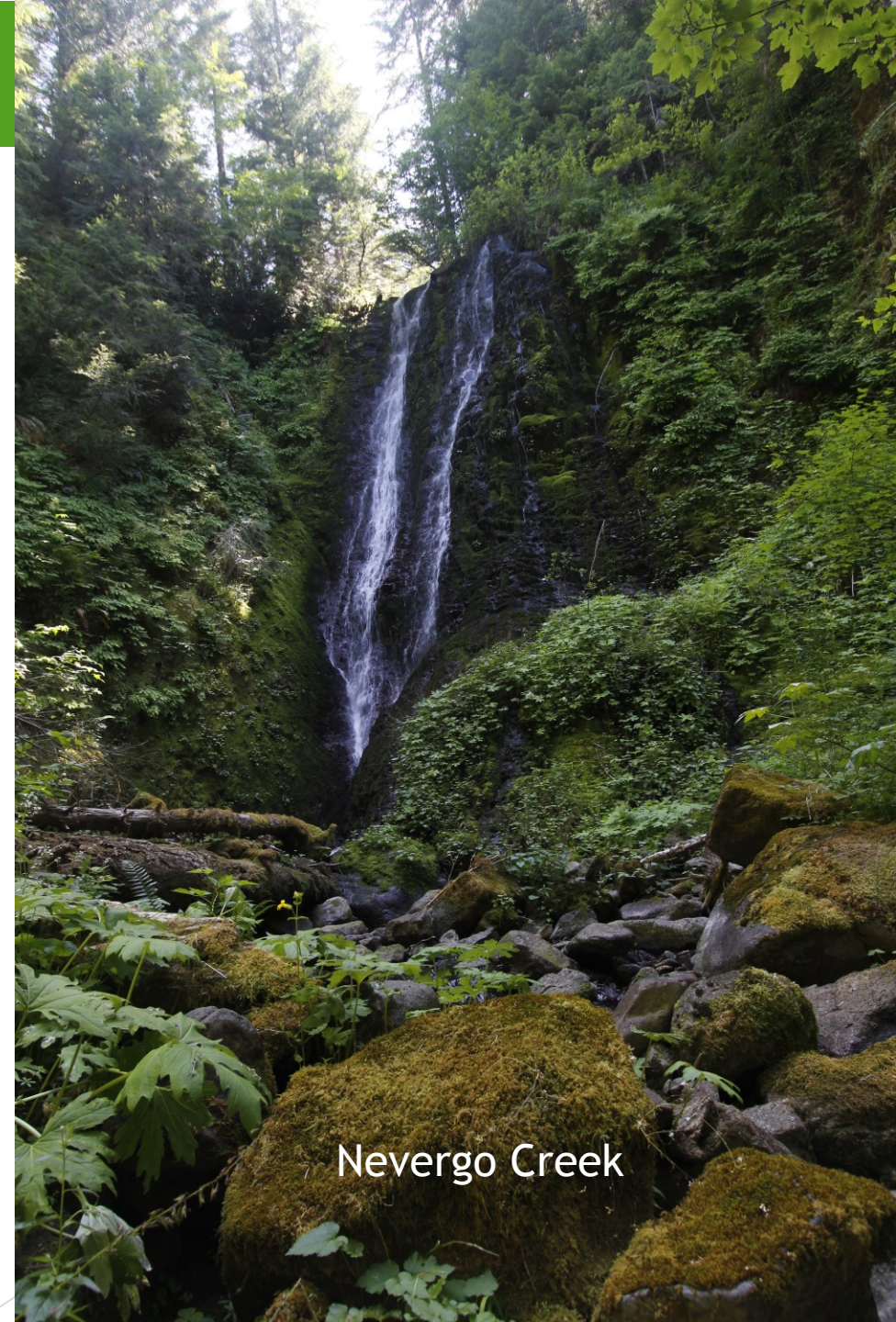
- 19,000 acres and 235 MMBF
- Still will take two years from initiation to signing of the first decision notice.
 - Subsequent decision notices - up to 6 - should take less than a year. Each Decision notice will cover approximately 3,000 acres.

Regulatory Frameworks In Place

Unique to the Region, we have Programmatic Agreements with:

- NOAA Fisheries - LAA for Spring Chinook
- USFWS - NLAA for Northern Spotted Owl

Each phase, data compiled from surveys will be reported to these agencies, including the State Historic Preservation Office, following the 2004 Programmatic Agreement.



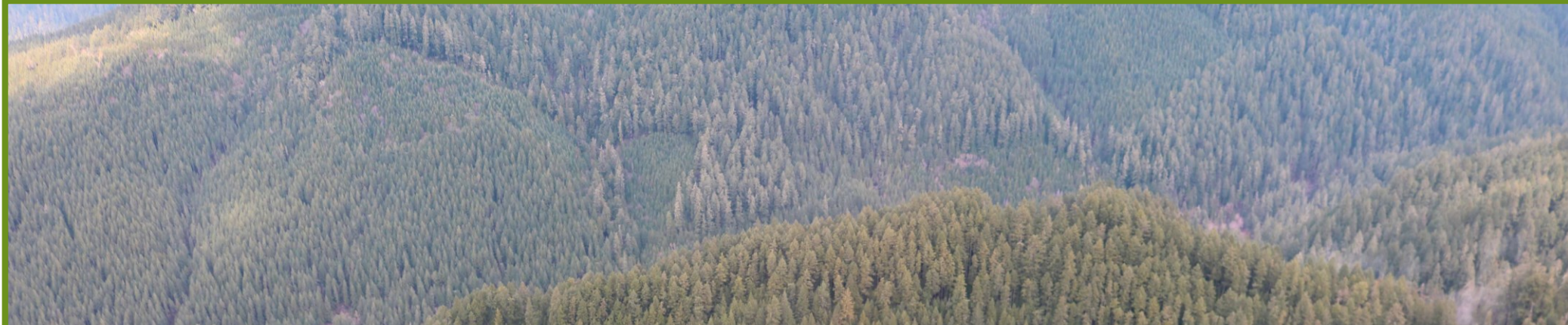
Nevergo Creek

Trade-offs and Potential Pit Falls

- Reduced flexibility with Silviculture treatments
 - Programmatic can be litigated
 - Data on selected stands may be inaccurate
- Changed conditions or new direction require additional analysis
 - Narrow focus doesn't allow for additional objectives



Jones Fire,
2017



Thank You

